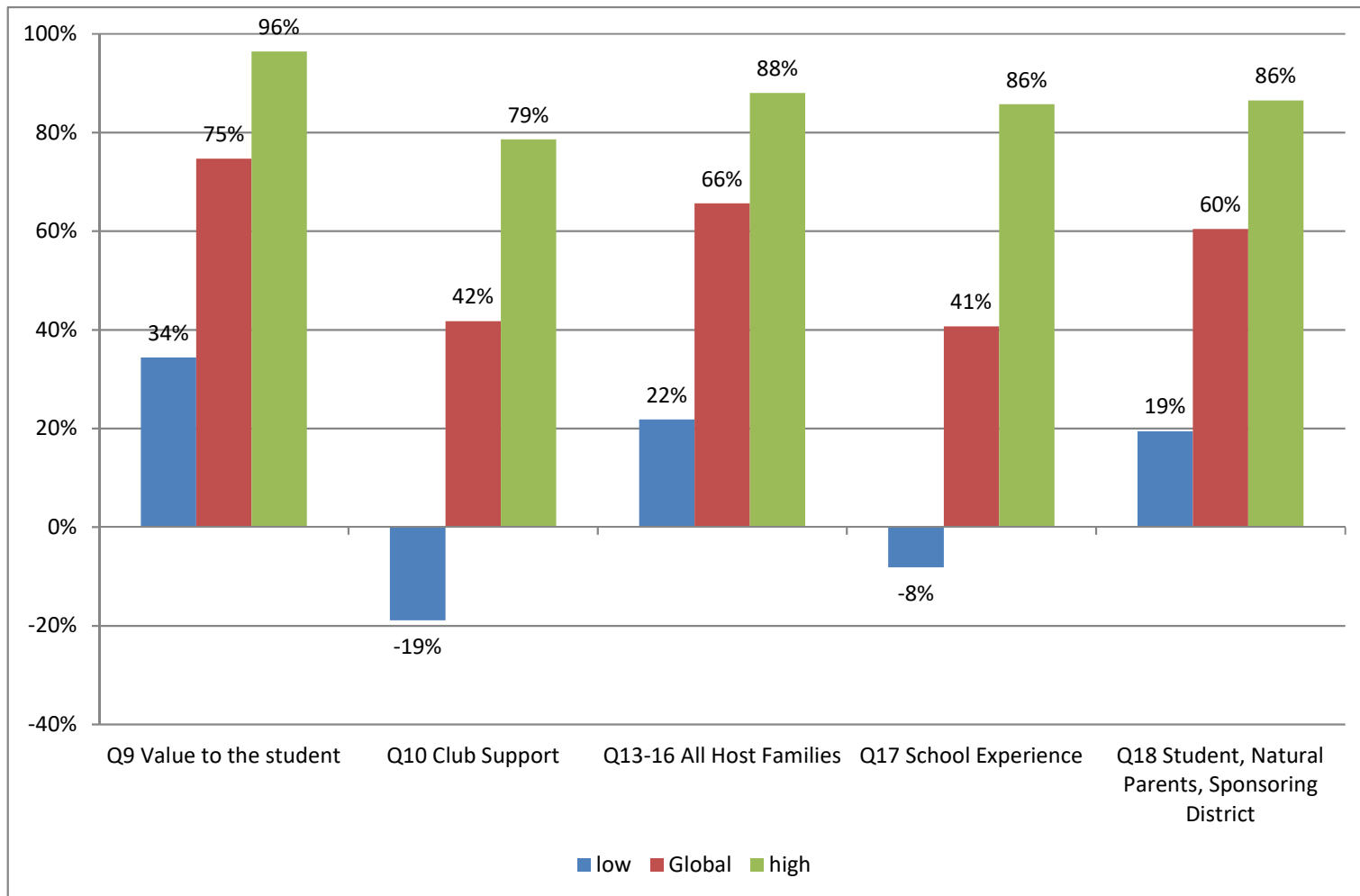


Global Results from 4045 Surveys

Hosted by 393 Districts in 50 Countries

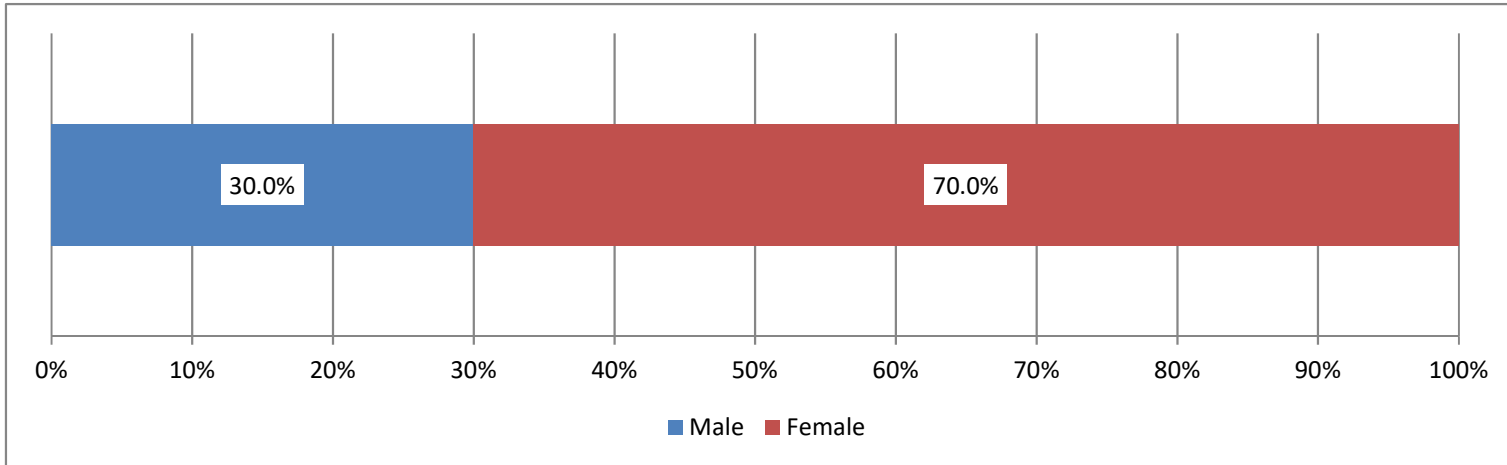
Sponsored by 393 Districts in 52 Countries



Note: this data was collected in 2012-2017, but covers exchanges reported from 2000 to 2016-2017

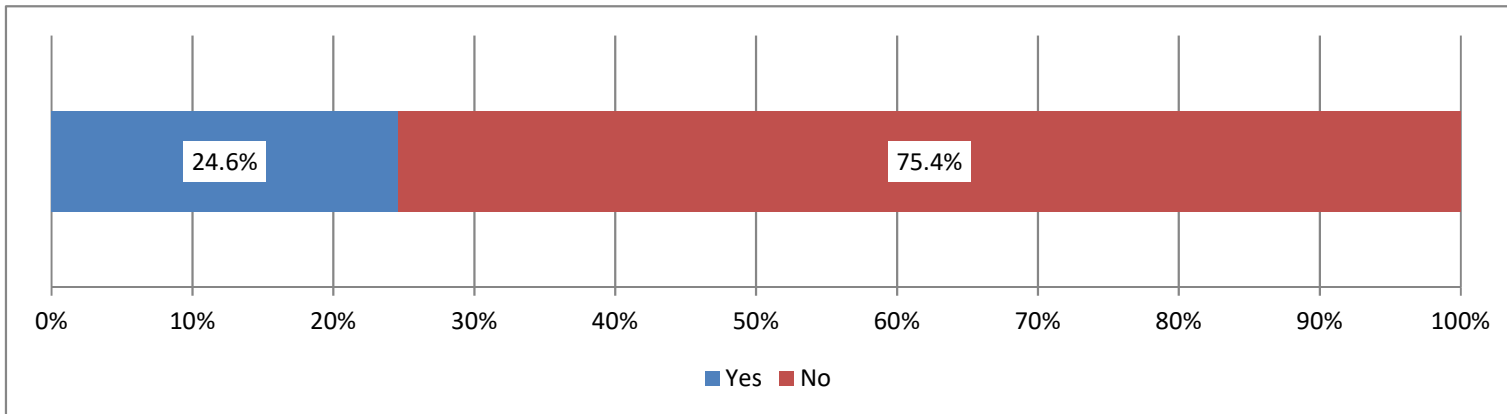
Q2 Gender

4045 responses



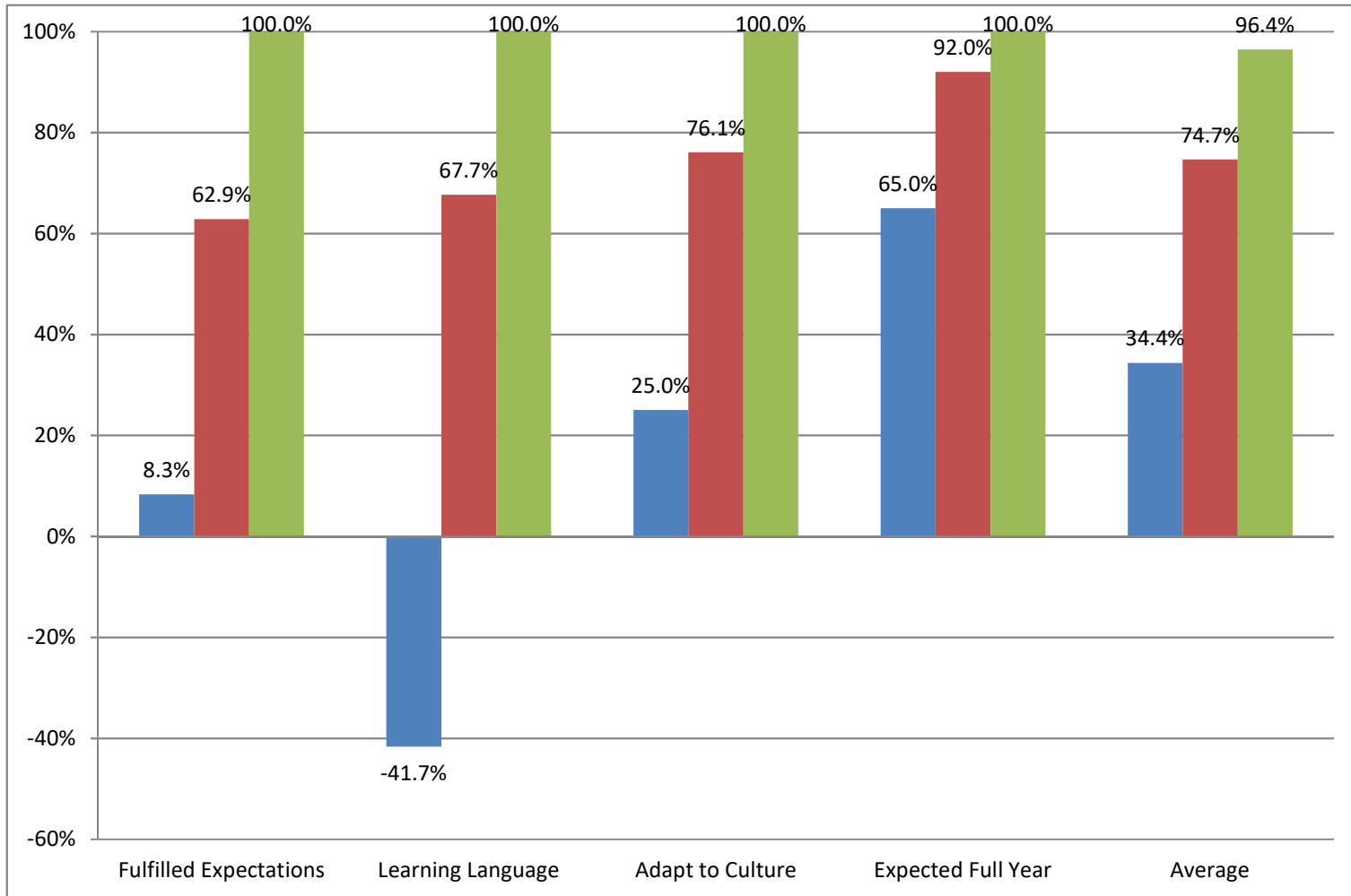
Q8 Rotarian PARENTS

4045 responses



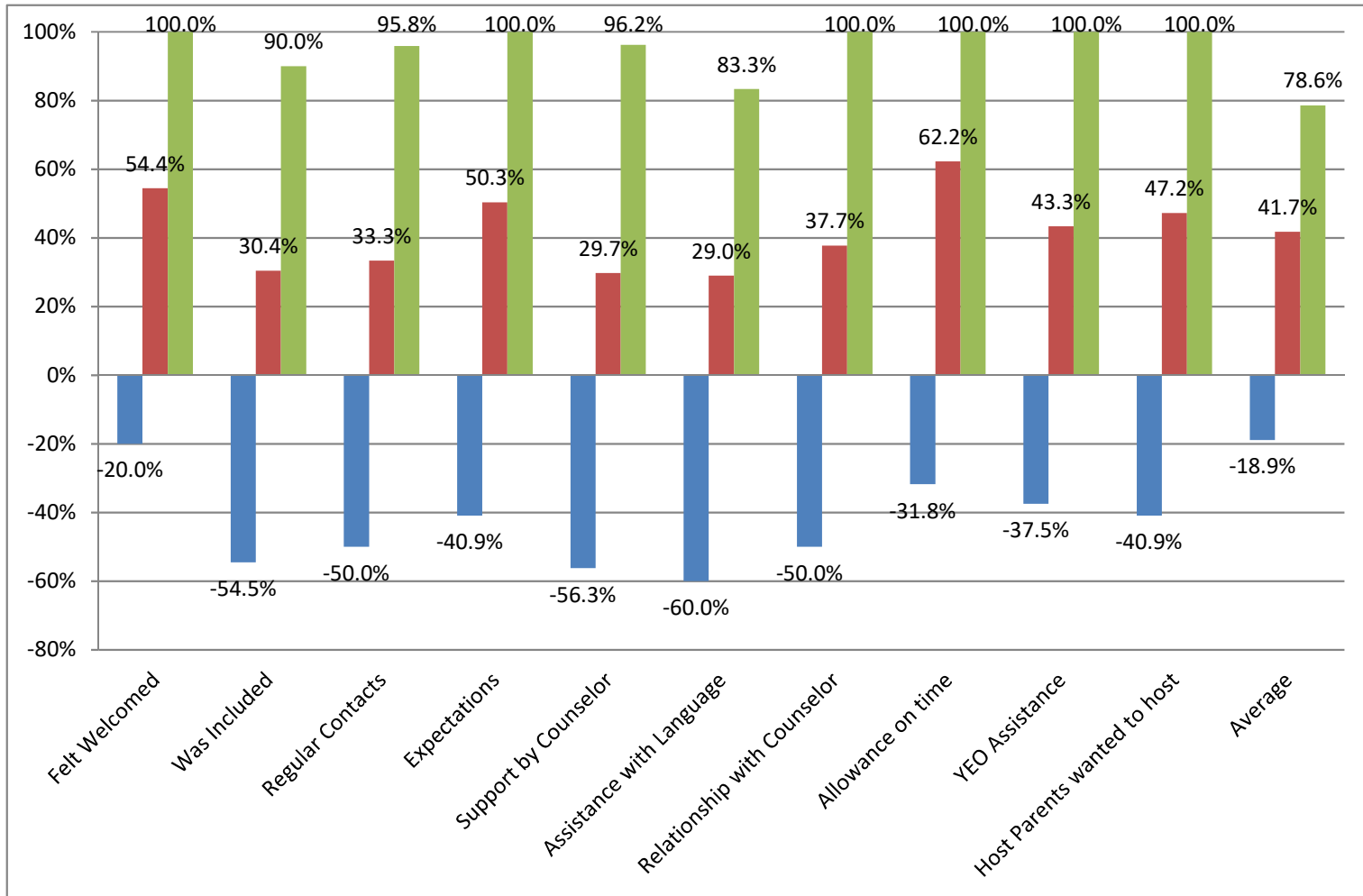
Q9 Value to the student

4036 responses



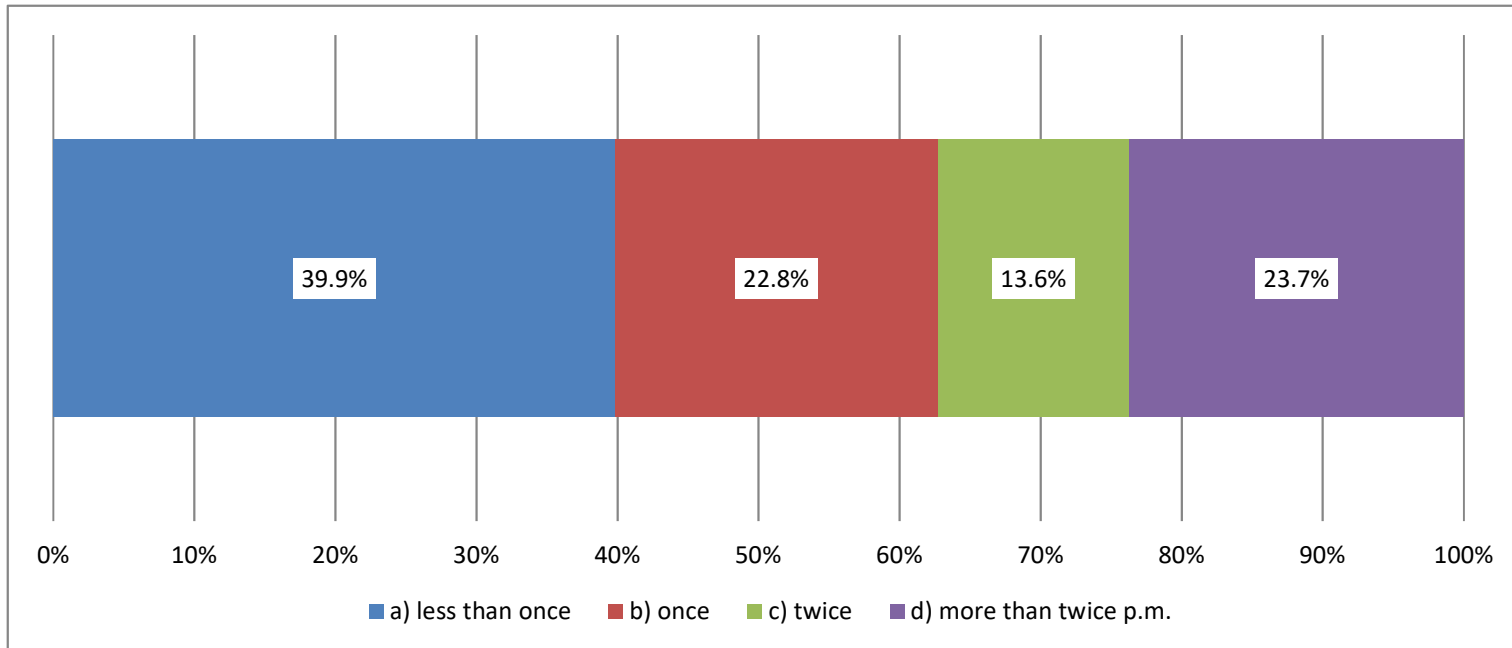
Q10 Club Support

4010 responses



Q11 Meetings with counselor per month

2825 responses

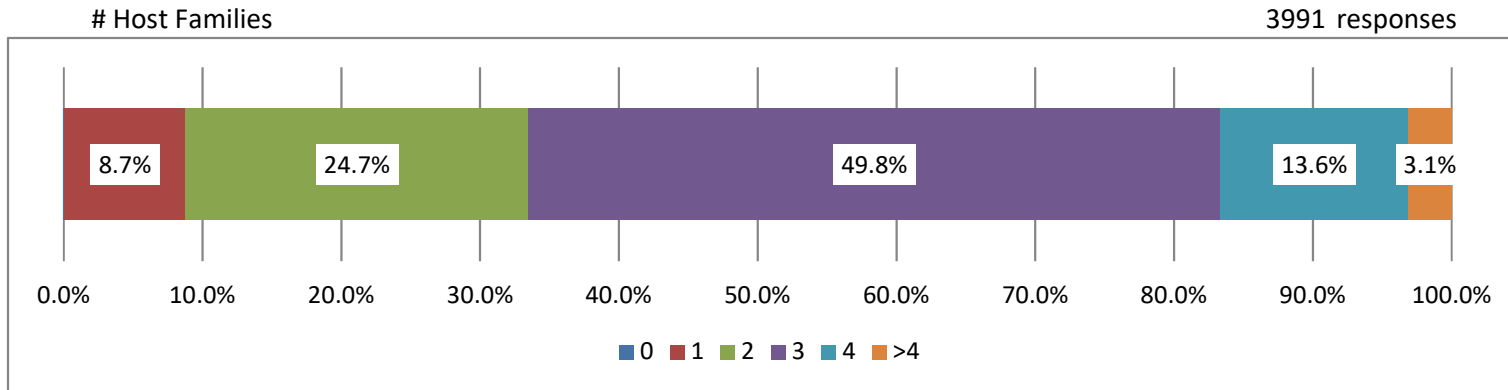


average median

1.2

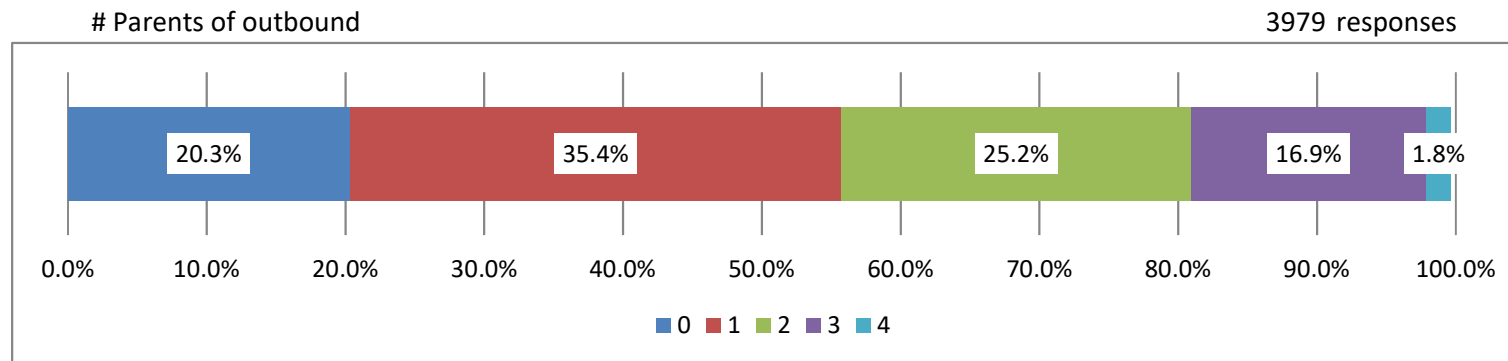
1

Q12 Number of host parents



average
2.8

median
3



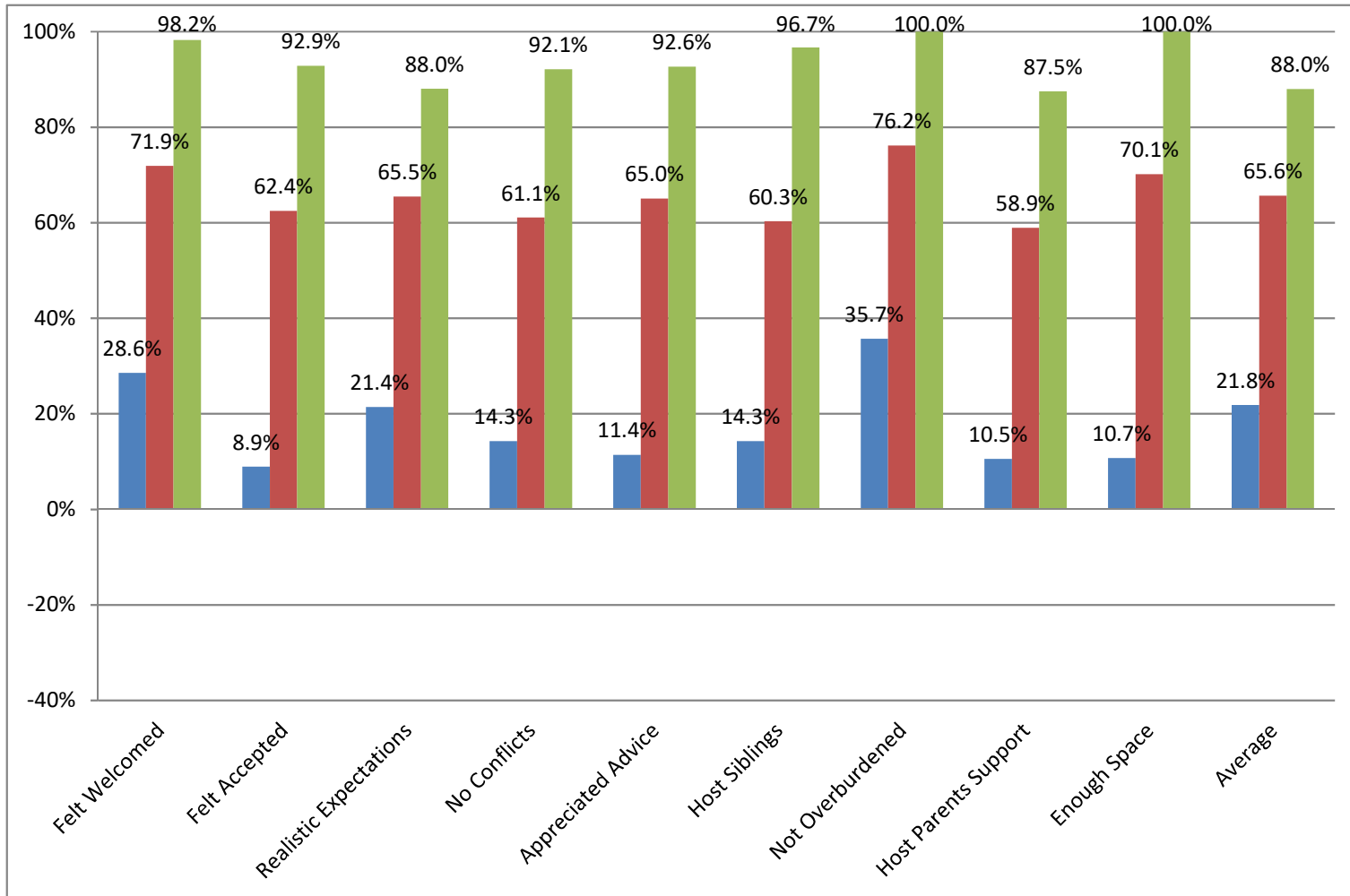
average
1.5

median
1

Note: "parents of outbound" refers to host families whose own child was away on exchange at the time.

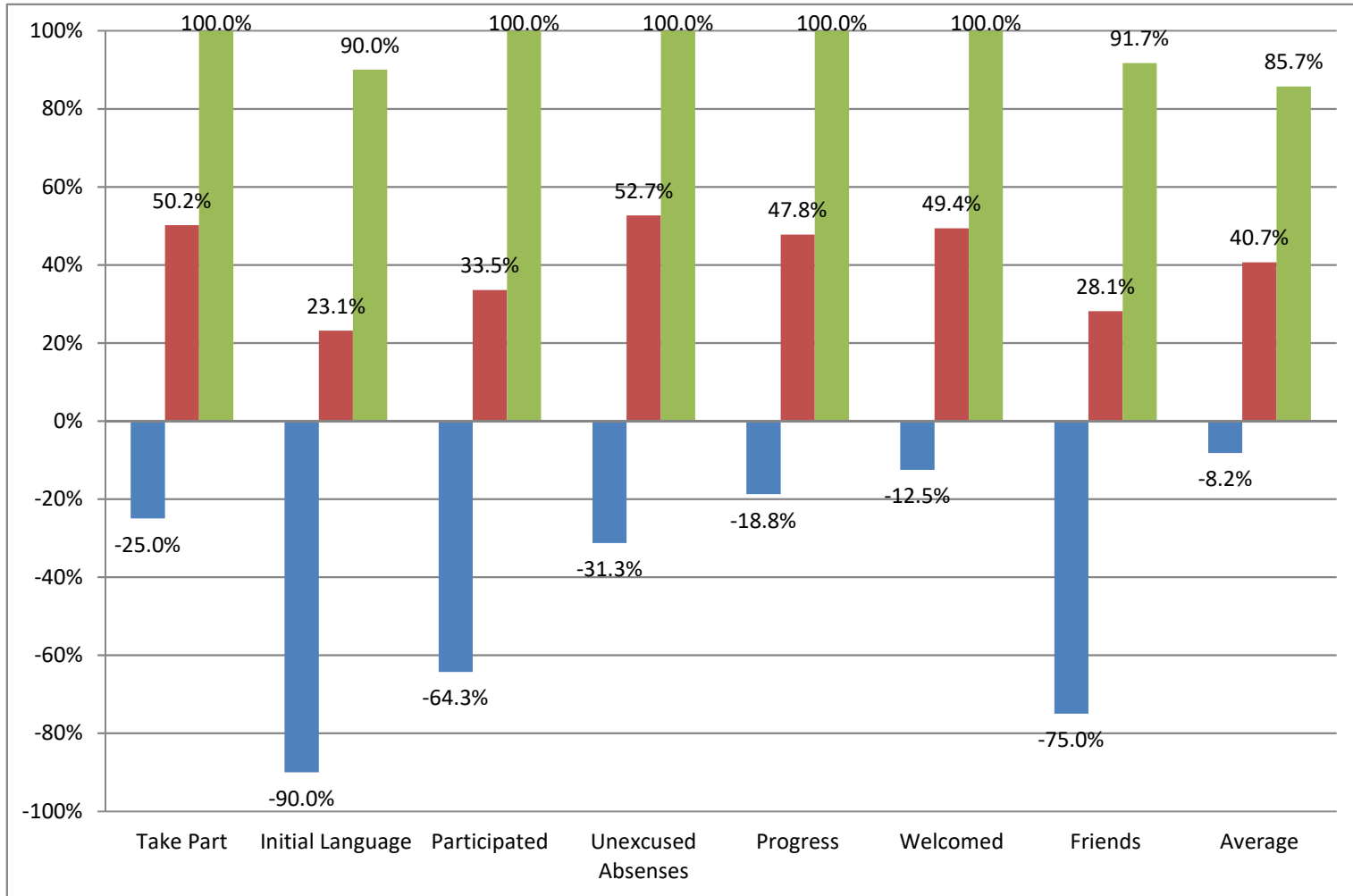
Q13-16 All Host Families

3934 responses



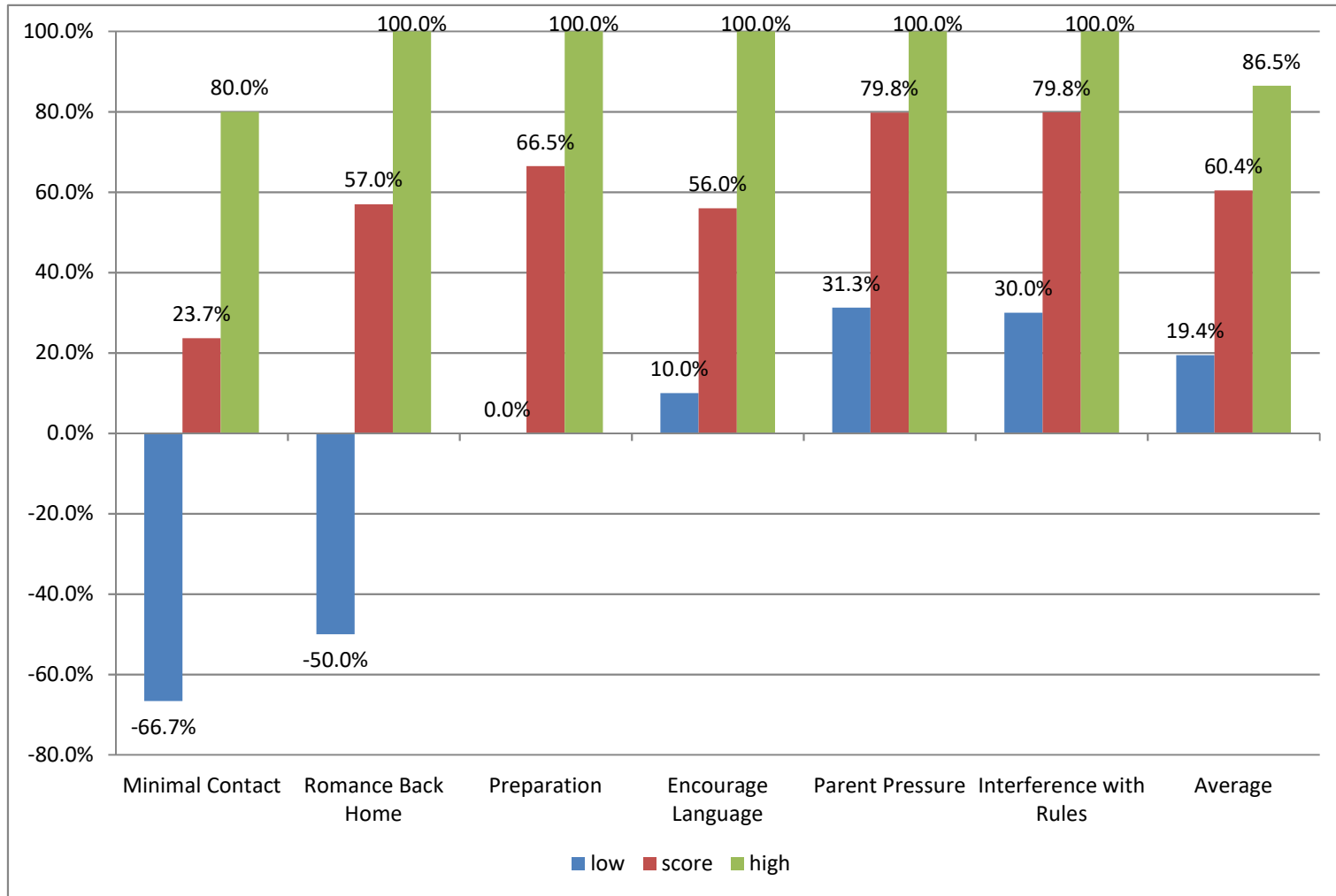
Q17 School Experience

3741 responses



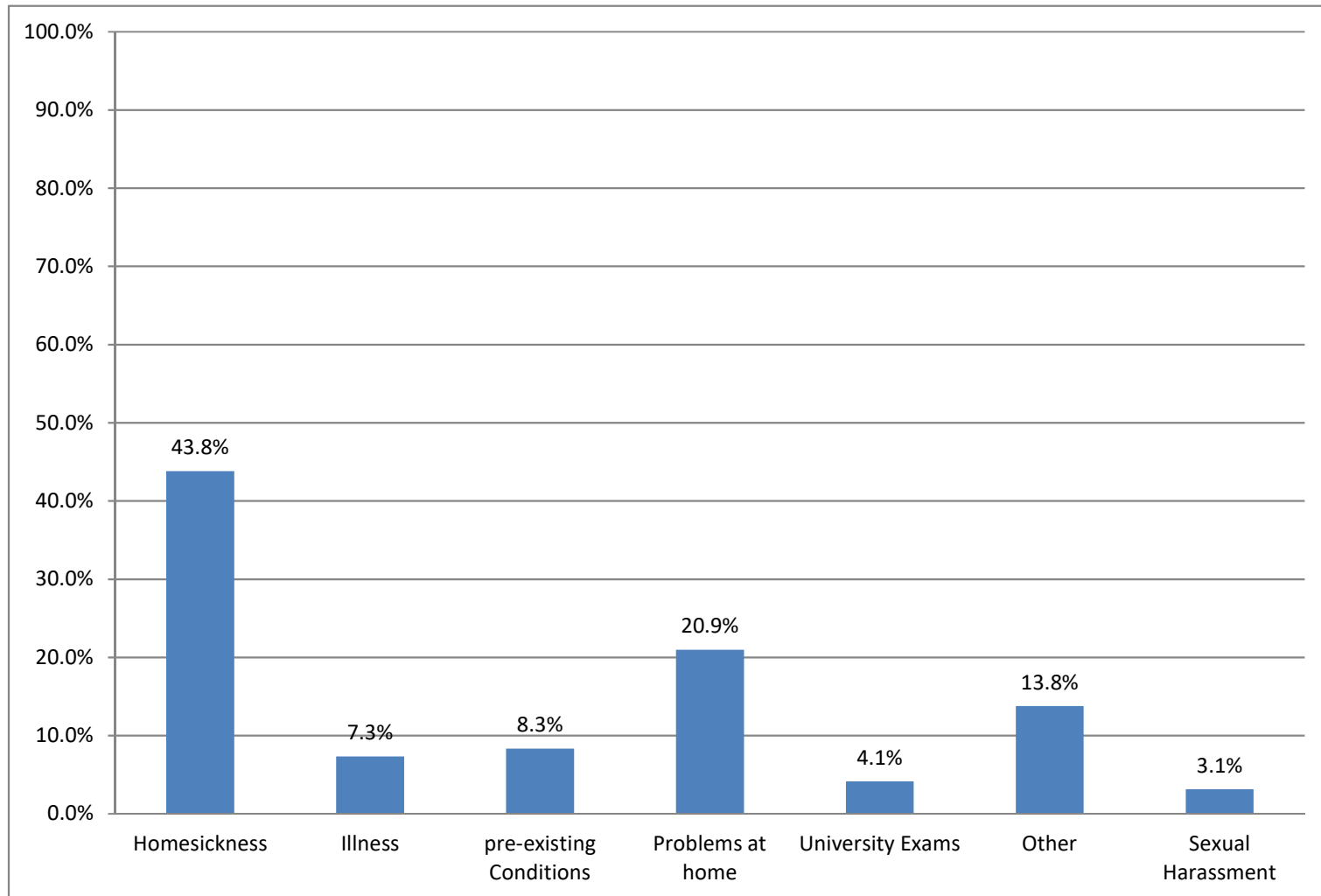
Q18 Student, Natural Parents, Sponsoring District

3711 responses



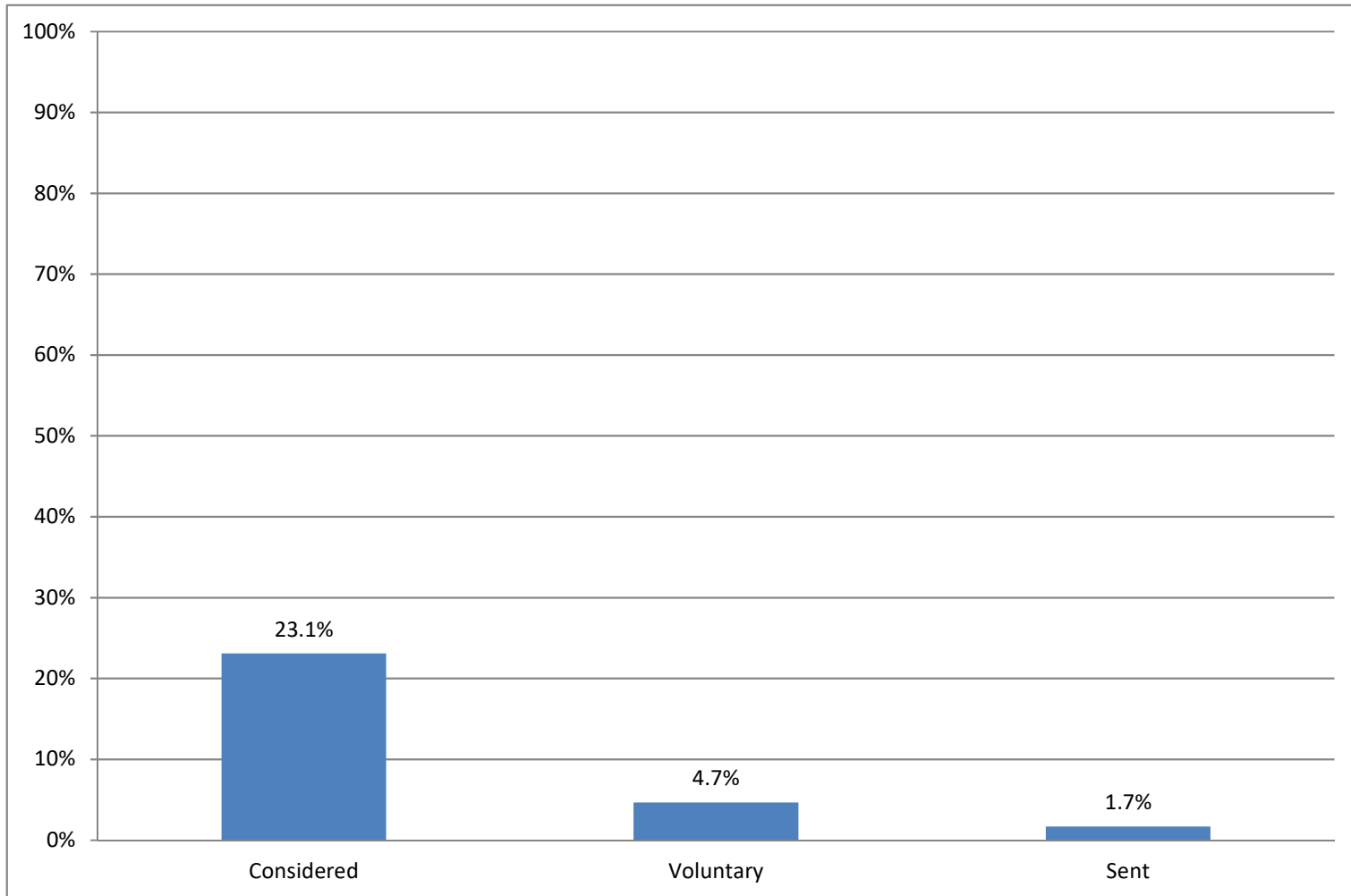
Q19&20 Influences Outside Student's Control

3689 responses



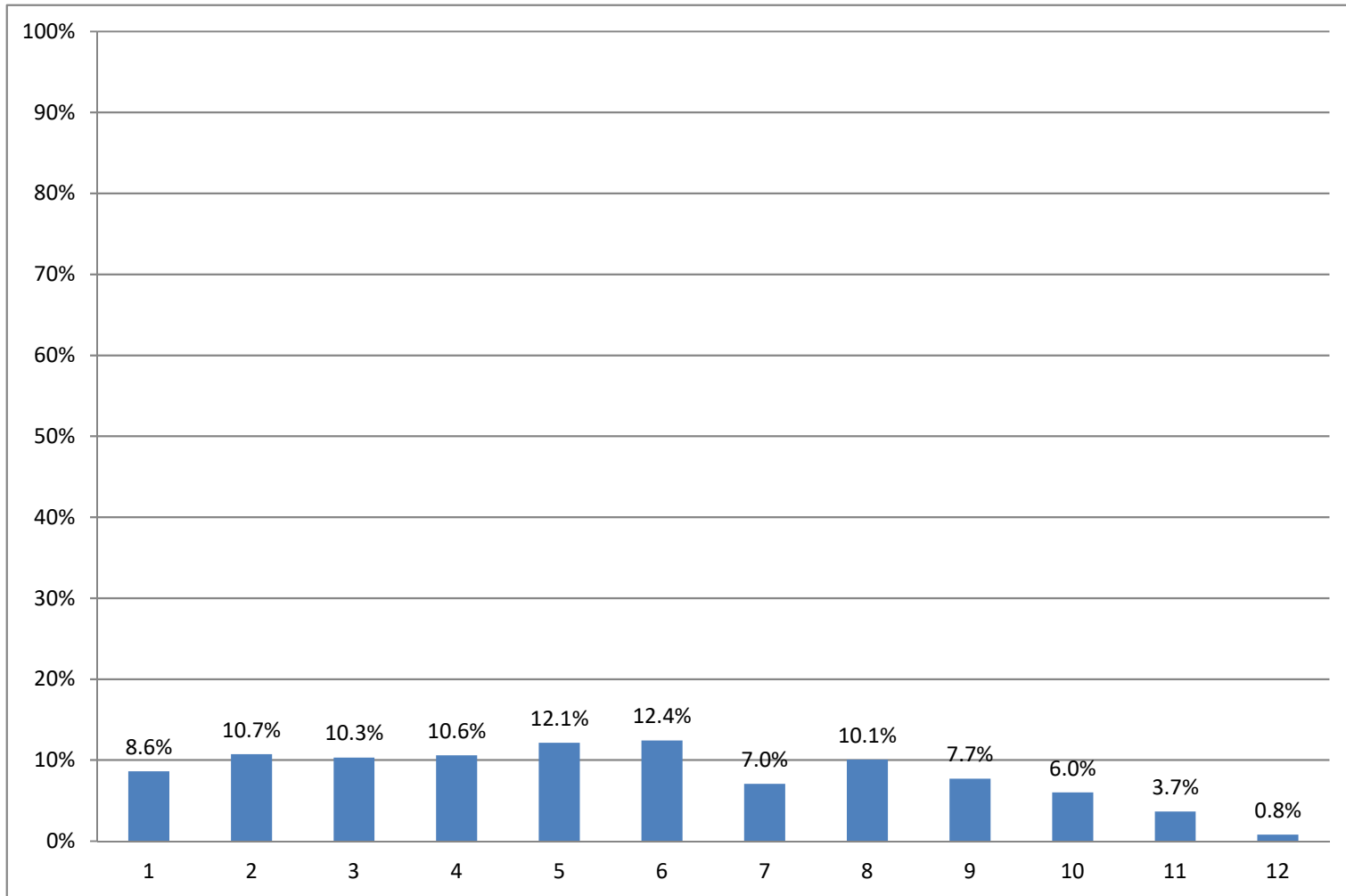
Q21-23 Early Returns

3625 responses



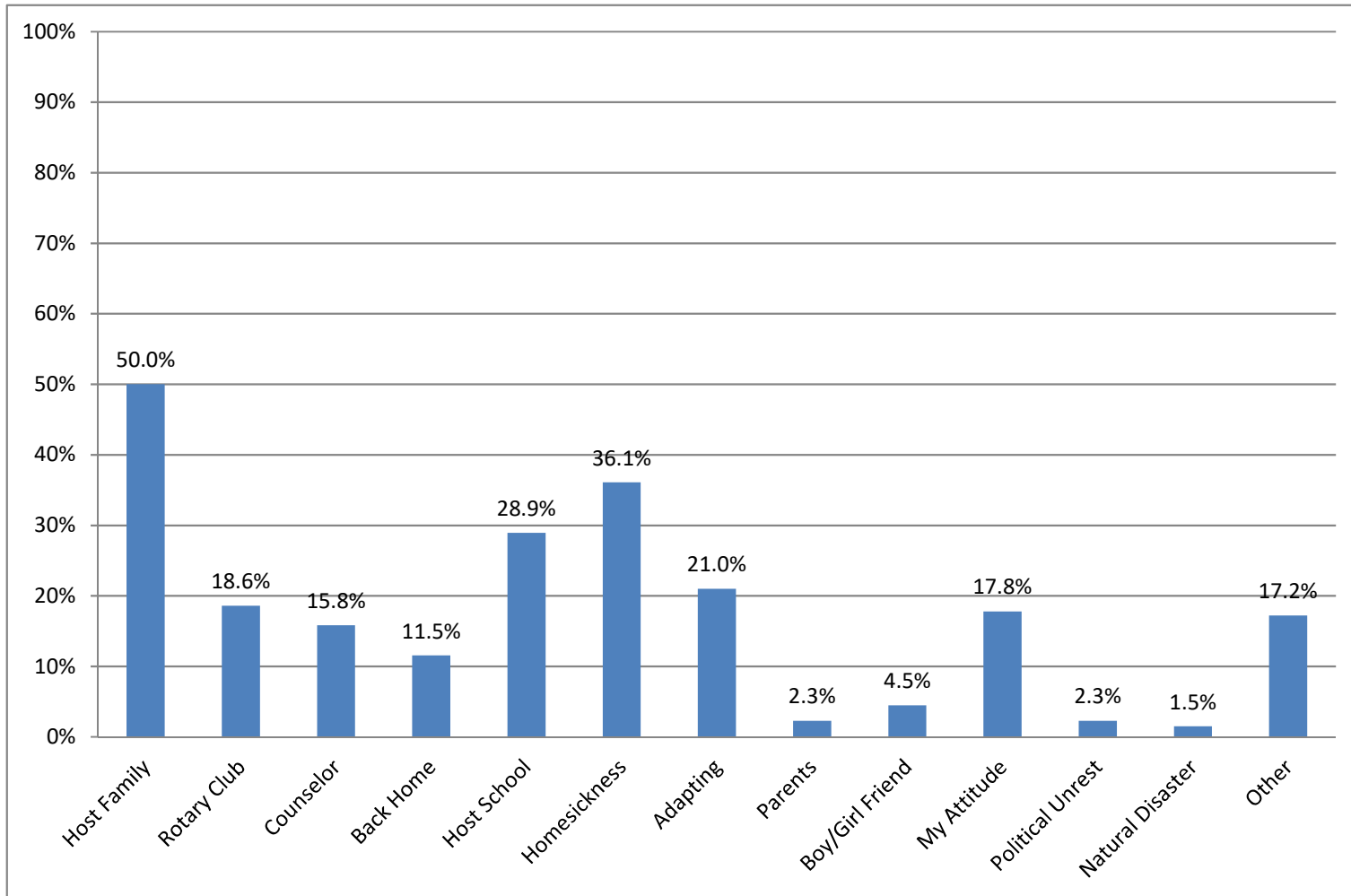
Q24 In which month did that happen?

766 responses



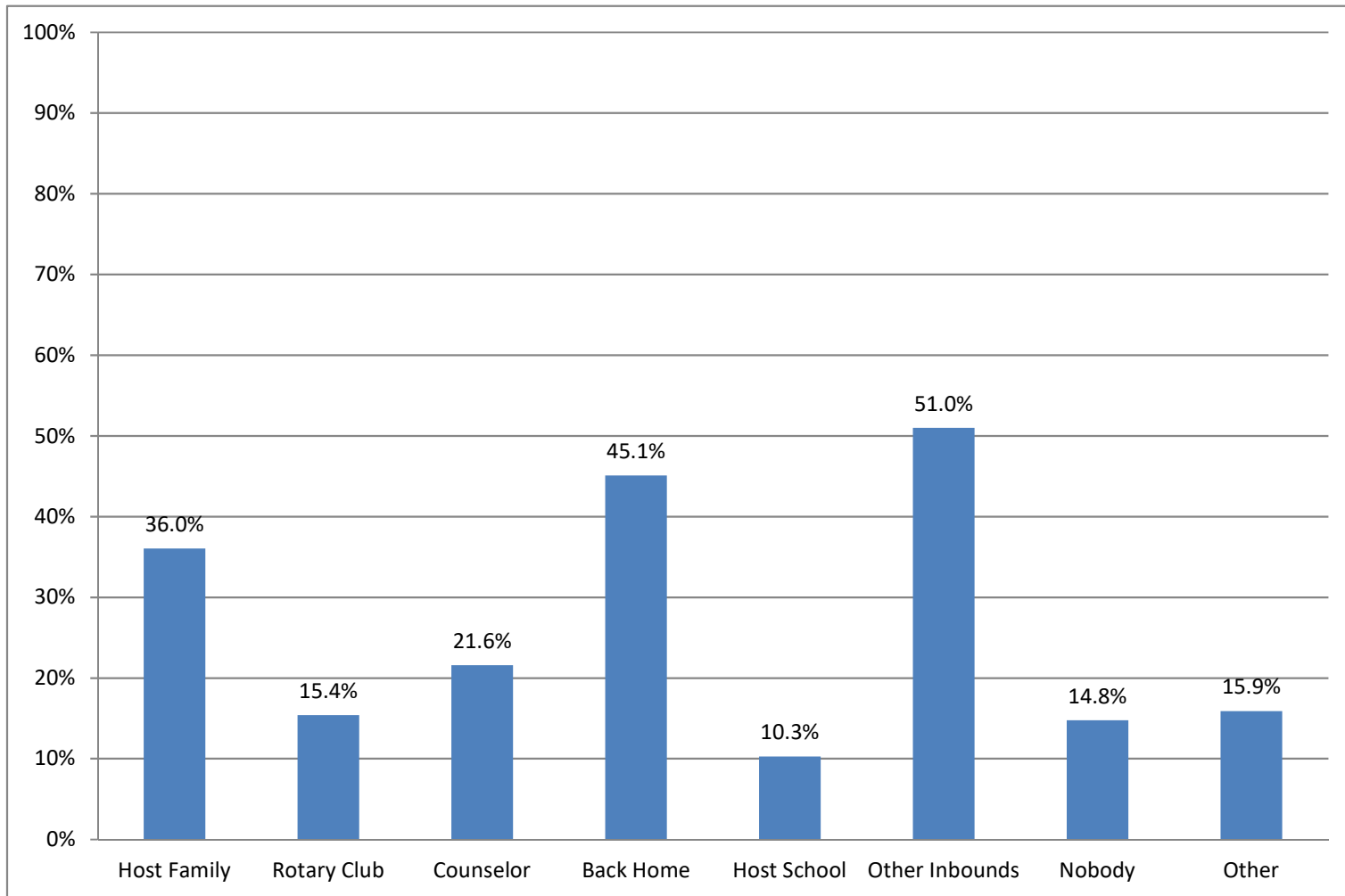
Q26 Where and how did the problem(s) originate

2288 responses



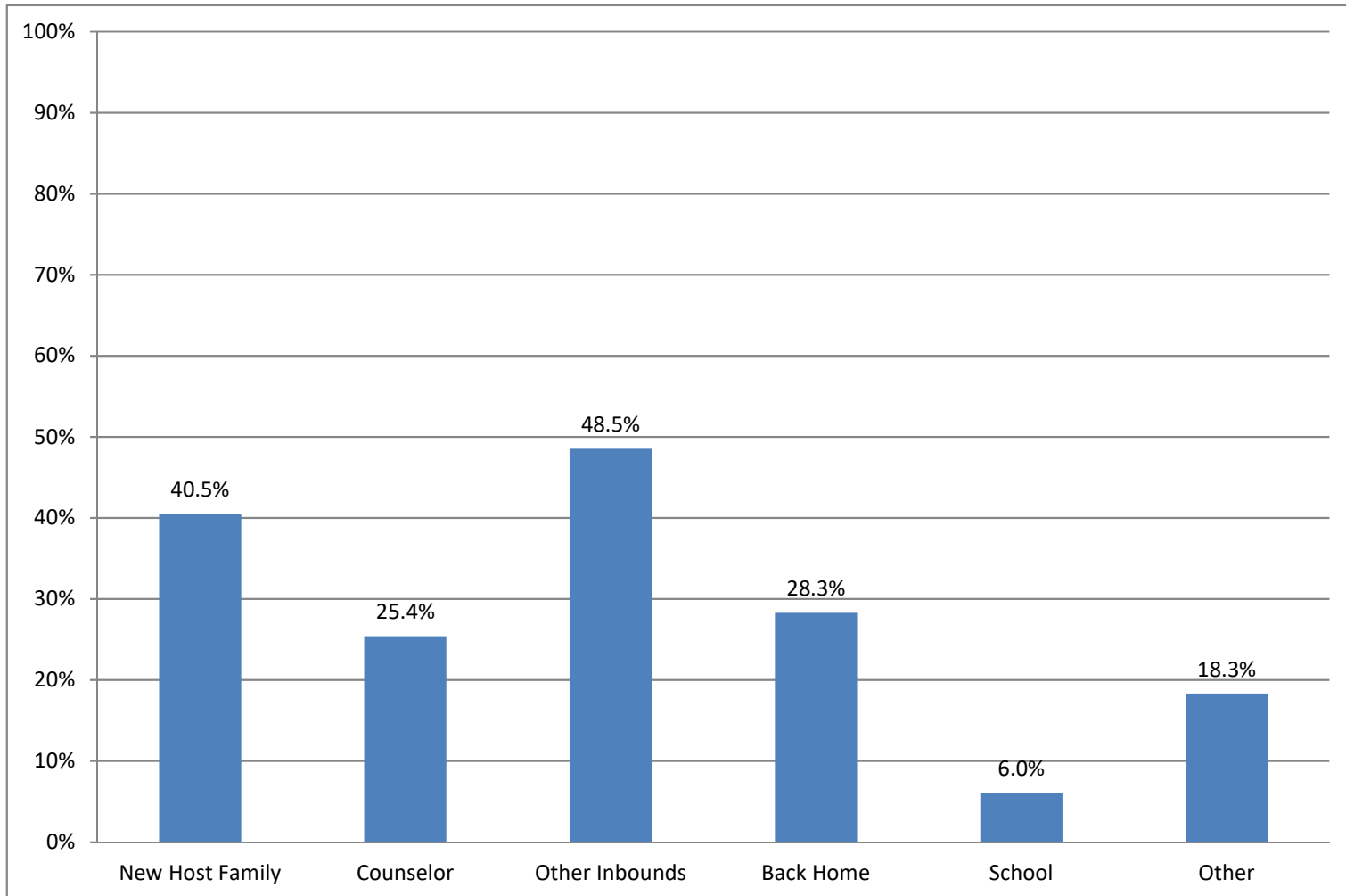
Q27 Who helped you to deal with the problem

2249 responses



Q29 What would have been the most helpful assistance anyone could have given?

1742 responses



Q31 confronted by host parents, counselors or other for Drugs or Alcohol

2457 responses

